

OLYMPIC CORPORATE CENTER III

A Truly Remarkable Corporate Home



OFFICE SPACE AVAILABLE FOR SALE OR LEASE

CHARLOTTE, NC

FEATURES

- Premier Location in Southwest Charlotte
- Class 'A' Architecture
- 1,200 to 25,000 SF available for sale or lease
- I-485 visibility with excellent exposure and signage opportunities available
- Easy access to Charlotte Douglas International Airport, I-85 & I-77
- Minutes from uptown Charlotte
- Build to suit opportunities available
- A state-of-the-art corporate campus blended with natural surroundings and beautifully maintained landscaping

CHRIS ORR

704-377-6134

chris.orr@pinnacle-properties.net



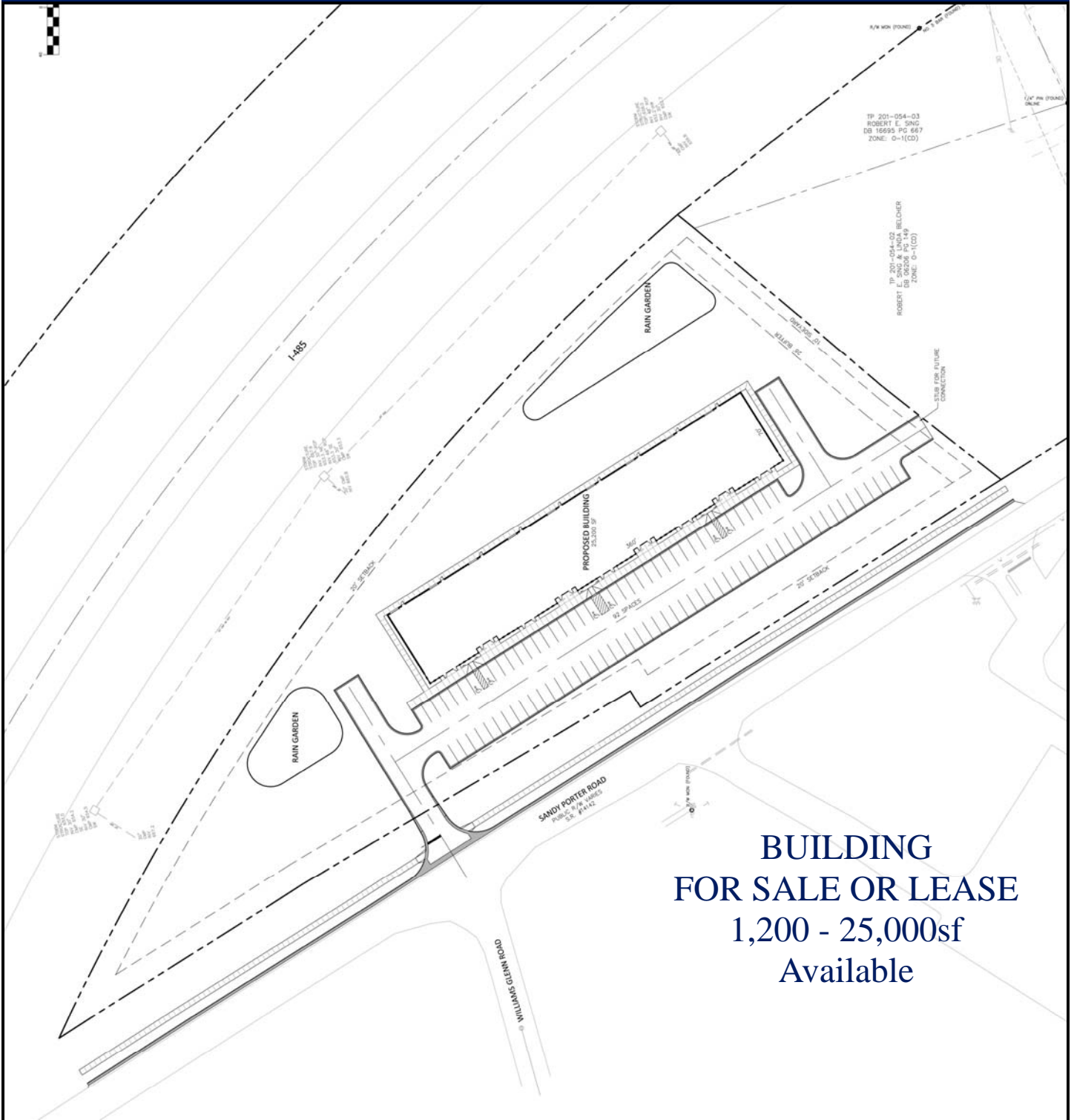
OLYMPIC CORPORATE CENTER



**PINNACLE
PROPERTIES, LLC**

610 East Morehead Street
Charlotte, NC 28202
www.Pinnacle-Properties.net

OLYMPIC CORPORATE CENTER III



**BUILDING
FOR SALE OR LEASE**
1,200 - 25,000sf
Available

CHRIS ORR

704-377-6134

chris.orr@pinnacle-properties.net



**PINNACLE
PROPERTIES, LLC**